



# KDM POWER SERVICE



# THE COMPLETE EPC SOLUTIONATION & I & C WORK SOLUTION

We provide superior construction services & facility management solutions that will meet our client's needs and exceed their expectations for the better growth and future of KDM power service.





## **OVERVIEW**

Our Founder Mr. Nikhil R. Solanki, Mr. Prajeshbhai D. Khuman and Mr. Hardikbhai J. Vala collaborate successfully with our clients as a work contractor for last three years. He has great experience in the solar field. Then he started his own construction firm, which came into existence in 2010 and started functioning at a time when the whole country was poised for rapid industrial solar.

A company decided to extend their services with the commitment for good workmanship in the field of civil construction and machinery work.



# GETCO & Govt. Approved Contractor All Type of Electrical Tower Line, Sub-Station & Civil Works

## WHO WE ARE?

KDM Power Service is established and registered with GETCO Civil & Electrical Class - B in year 2010. KDM is started by three young, dynamic & technically sound Partners. KDM started with vision to use the power of science to deliver unexpected output of natural resources and building the next generation future with eco - energy.

KDM has professional, trained and technically sound team that closely working with clients to deliver customized solution to satisfy customer expectation through the application of design, Consultancy, engineering, Project planning, Execution & management services. Also, KDM have team to support service and maintenance timely.





## Vision

To become a major EPC Solution Provider in field of large - scale Renewable Energy Projects and establish a global acknowledgment as customize, practical, cost effective, profitable solution provider in the same field.



## Mission

Be a world's customize, cost effective solution consultant with outstanding expertise, innovative solutions and result oriented. To be a technically sound leader and deliver best solution to private and public sector customer in the field of renewable energy.

# CORE VALUES

The guiding principle of organization: Five Core Values:



## Customer Centric:

We are entrepreneurial and agile, passionate about creating value for our clients and achieving very high performance. This is reflected in our focus to client needs, earning a fair return on the value we deliver.

## Collaboration:

We believe in diversity, the power of team work & that by working as one we can deliver exceptional out comes. We welcome new idea and offer help.

## Trustworthy

All our relationships are built on trust. We are transparent and ethical. We act with integrity, keep our word and treat everyone with respect. We empower others and we feel empowered. We follow the rules.

# CORE VALUES

The guiding principle of organization: Five Core Values:

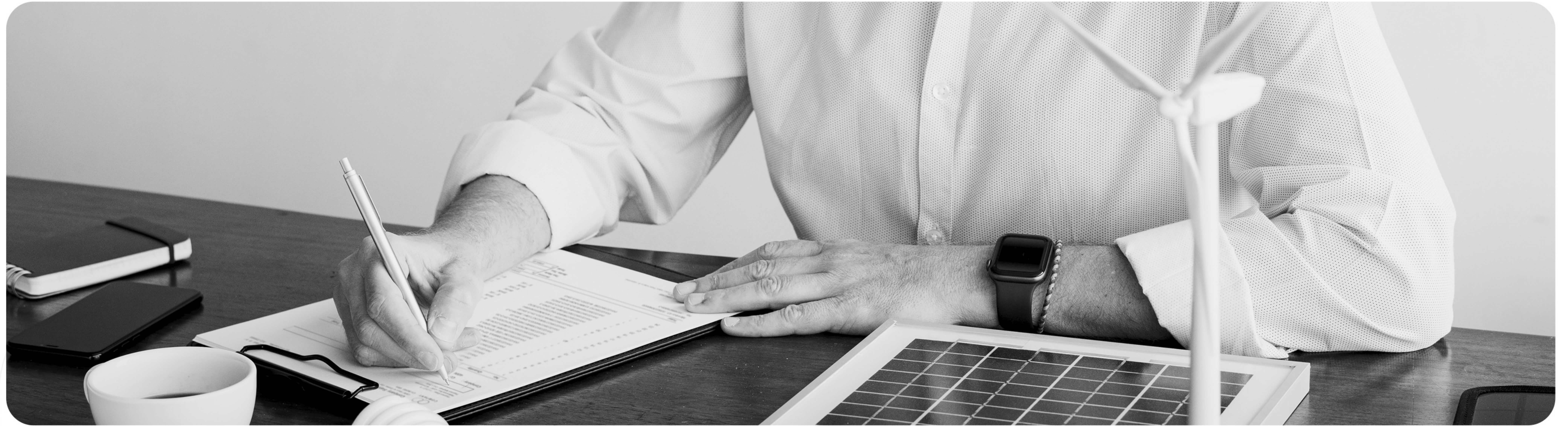
## Innovative

We must constantly anticipating and responding to changes with positive attitude. We are solution provider and explore to new ideas, think out of box solution and learn from our experiences. We train & keep upgraded with new technologies and always welcome new idea.

## Sustainability

We own the responsibility to sustain our world and society in a balanced way with health, safety and well being of people and all the stakeholders central to all we do. We improve the quality of life in society and protecting the environment.





## **HSE POLICY**

KDM Power service executes all its activities in such a way as to ensure the safety, Health and welfare of all its Employees, Workers and Clients to achieve the goal of safe, Zero accident and environmentally friendly nature. We care for safety, health, welfare and the conservation of natural resources by an effective utilization is top management priority. It is the responsibility of all managers to provide a safe working environment, proper tools & equipment. All employees and workers execute their work in such a manner as to prevent circumstances, which could lead to incidents that can cause personal injury, illness, property damage and pollution.

All employees and workers have a shared responsibility for HSE, Its maintenance & ongoing improvement.

## **HEALTH & SAFETY POLICY**

We believe in "Health & Safety" comes first. We care for safety of our work force, Customers and provide healthy & Safe working environment. We promote a "Zero Injury Philosophy" with good health of our worker, staff and community. We are committed to follow safety rules and achieve highest safety standards across all level of our services.

## **QUALITY POLICY**

We are committed to achieve highest Quality standard in all the services we offers. We believe in continue improvement and achieve our set goal to satisfy our customer's quality expectations by reliable and value for money services. We motivate our work force, staff to improve quality standard at all the level of work. We ensure strict compliance with laws and regulations pertaining to the quality & safety.

## **ENVIRONMENT POLICY**

At KDM, Our highest priority is to compliance and protection of environment. We work in direction of continual improvement and prevention of pollution. We focus on waste minimization, reuse, recycle of natural resources and resources conservation. We believe in sustainable growth with clean, healthy and safe environment to society.



# OUR JOURNEY



## 1. Navsari

Erection of 66Kv Dolvan: Manglia Line for 66 Kv Mangalia S/S



## 2. Junagadh

Annual Contract of Fabrication of GI S/S Tower Structure & Fab of 66Kv 'H' Frame Structure and Accessories at Construction Divisional Store Keshod



## 3. Amreli

Erection, Testing & Commissioning of 66KV D/C (LLO) Tower Line at Proposed 66KV Babariyadhar S/S From Existing 66KV Vijapadi-Mota Khuntavada S/C H-Frame Line on Dog Conductor



## 4. Amreli

66KV Babariyadhar S/S



## 5. Amreli

66KV Nonghanvadar S/S



## 6. Amreli

66KV Kalsar S/S



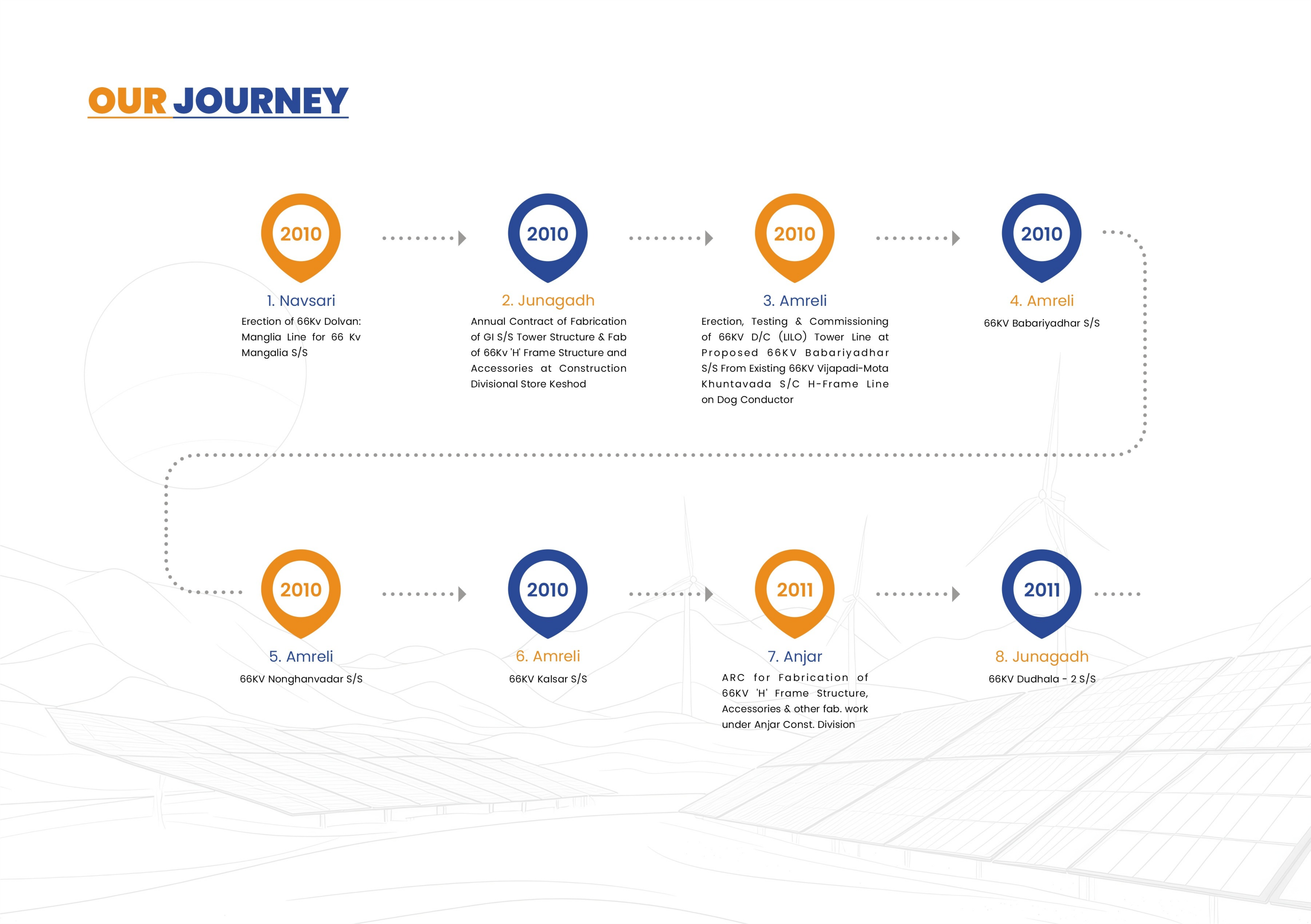
## 7. Anjar

ARC for Fabrication of 66KV 'H' Frame Structure, Accessories & other fab. work under Anjar Const. Division



## 8. Junagadh

66KV Dudhala - 2 S/S



# OUR JOURNEY



2011

9. Amreli  
66KV Billa S/S



2011

10. Junagadh

Work of Erection, Testing & commissioning of 66KV D/C Panther Tower Line on Panther Conductor from 66KV Mota Ankadiya S/S to 66KV Kukavav S/S. (Line Length Approx: 14 RKM)  
Note: 1.5 RKM Stringing done.



2013

11. Rajkot

Annual Contract of Fabrication of GI S/S Tower Structure & fab. of 66KV 'H' Frame Structure and Accessories at Construction Divisional Store Vankaner



2013

12. Amreli

Work of Erection, Testing & commissioning of 66KV S/C 'H' frame Line from 66KV Dedan to 66KV Mota Barman S/S on Penthre Conductor  
Note: Work Alloted dt.3rd Oct. 2013



2013

13. Amreli

Work of Erection, Testing & Commissioning of 66KV S/C H Frame Line from 66KV Lakheni to 66 KV Kalatralav S/S on dog Conductor



2014  
2015

14. Amreli

Work of Erection, Testing & commissioning of 66KV S/C 'H' frame Line from 66KV Lakheni to 66KV Kalatralav S/S on Dog Conductor. (Line length Approx: 14 RKM)



2015  
2016

15. Anjar

Work of Erection, Testing & commissioning of 66KV S/C 'H' frame Line from 66KV Dedan to 66KV Mota Barmar S/S on Panther Conductor. (Line length Approx: 12.5 RKM)



2017  
2018

16. Amreli

Work of Erection, Testing & commissioning of 66KV D/C Panther Tower Line with S/C Stringing of Panther Conductor of 66KV Hathsani Road S/S from 220KV Savarkundla S/S. (Line Length Approx: 8.50 RKM) Note: Work Done as Sub Contractor

# OUR JOURNEY



## 17. Amreli

R & M Work of Mechanical Strengthening and Replacement Conductor, Insulator and Hardware of 66KV Chalala Sarambhada H-Frame & Tower Line, Line Length Approx: 17.07 RKM) (Cold Condition: 15.47 RKM, Hot Condition: 1.6)  
Note: Cost of Old Material Conductor & Hardware



## 18. Ayana

210 kv charkha



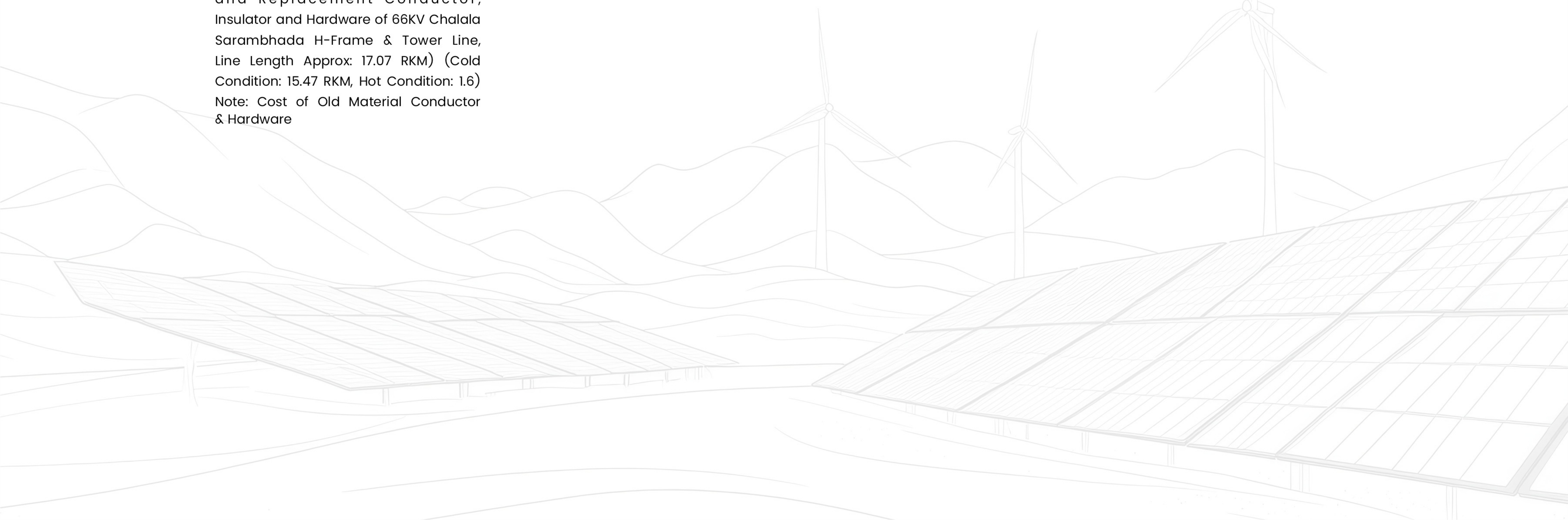
## 19. Kagdadi/Bhader

20 MW 2024-25



## 20. Surel

35 MW Torrent





## **PRODUCT RANGE**

- EPC Projects
- Operation & Maintenance
- Upto 220 KV Line
- Erection Work
- 33KV Line Work

## **PROJECTS DONE**

5 nos. of GETCO Substation  
Multiple Line  
Electrical (Class B) Projects  
GETCO & Gov. Approved Contractor  
EPC projects  
All type of Electrical Tower Line Projects  
Substation Erection Projects  
Civil Works (Class B) Contractor  
33KV Line Erection  
Stringing of all type of conductors  
Control Room Wiring  
Underground Cable Work (UG Cable Work)  
All type of Control Panel Installation and maintenance work

## **MECHANICAL &** **ENGINEERING MANPOWER**

Welders (TIG, MIG, MAG)

Pipe fitters

Fabrication, Cutting, Drilling Operation

Lathe Operators

CNC Machine Operators

Civil Engineers

Maintenance & Service Engineers





## **ONSITE TESTING SERVICES**

### **■ On Site Testing of Power Transformers**

Capacitance and Tan Delta Measurement  
Sweep Frequency Response Analyzer  
Low Voltage Routine  
Transformer Winding Resistance  
Turns Ratio Measurement  
Insulation Resistance Measurement and  
Polarization Index  
DGA/BDV/PPM in ERDA

### **■ On Site Testing of Circuit Breaker**

Dynamic Contact Resistance Measurement  
Static Contact Resistance Measurement  
Timing Test of Circuit Breaker  
Insulation Resistance Measurement  
Dew Point Measurement  
High Voltage Test on VCB. (0-30KV AC)  
(0-60KV DC)

## **THERMOVISION**

■ Switch Yard  
■ Electrical Motors

■ Transmission Lines  
■ LT Bus

■ Generator  
■ Jumpers

# **ONSITE TESTING** **SERVICES**

## ■ **On Site Testing & Protection Scheme Check:**

Line Distance Relay  
Line Differential Relay  
Transformer Differential Relay  
Motor/Generator Protection Relay  
Directional Relay  
REF Relay  
Transformer/Motor/Generator  
Differential Stability Check  
Transformer REF Stability Check  
Bus Bar Differential Stability Check

## ■ **On Site Testing of Current Transformer & Potential Transformer:**

Capacitance and Tan Delta Measurement  
Polarity Test  
Primary Injection Test  
Knee Point Test  
Insulation Resistance Measurement



**TURNKEY**  
**PROJECT OF**  
**WIND /**  
**SOLAR PARK**



- Tower Line ETC work
- Pole Line ETC Work
- Road & Area Development of Wind & Solar Park.
- Wind & Solar Park Development

# OPERATION & MAINTENANCE SUPPORT FOR WIND / SOLAR / PLANT



## ■ Operation & Maintenance of

Substation

Pole Line

Tower Line

Solar Park

Wind Park

- Technical & Skilled Manpower Supply for Electrical, Mechanical & Civil Work
- Emergency Response Team for Electrical, Mechanical & Civil Work
- 24/7 Condition Monitoring of Solar & Wind Park
- Consultancy of Solar & Wind Park Development
- WTG, TCI & Modification Work
- Special Performance Improvement of BOP
- Professional Engineers & Technical Manpower Services



## **OPERATION &** **MAINTENANCE HV / EHV**

More than 1100MW EHV  
SS / Line under O & M

- Operation & Maintenance of Substation and HV / EHV Lines upto 220KV
- Testing of Substation electrical Equipment like Transformer, Breakers, CTS, PTs, 220KV System
- Power Transformer Oil Filtration, Repairing and Overhauling
- Manpower Deployments like Expert, Engineers, Technician, Skill and Semi-skill workers
- 24 X 7 Emergency and Shutdown services
- Switchyard Insulator and Power Transformer Bushing Washing
- Maintenance of Lattice Structure of CT, PT, Isolator, Circuit Breaker etc.



## **CABLE LAYING ABOVE GROUND &** **UNDER GROUND**

We have Skilled Team and huge resources to handle large size high voltage cables and well equipped with knowledge technician in field of revising cable laying methodology for better reliability of cables underground or overhead cable work.

### **Step are as follow**

- Power and control cable laying
- Connection of DC Strings
- Containment
- ICB and Inverters Testing, Certification, Commissioning, Inspection and Handover

Our team past experience of offering reliable jointing services, installation and testing of termination Raychem Heat Shrinkable cable accessories, 3M pre-molded cable accessories, Dry type GIS plug in terminations of Raychem etc...



**After satisfy testing the cable drums will be dispatched to site for installation work.**

Installation work follow as under:

- Storage of Cable Drums
- Route survey for installation
- Type of installation
- Road Crossings / Pipe laying
- Trenching
- Cable laying in (trench/trays/ ducts/racks)
- Testing at site
- Jointing
- Route markers

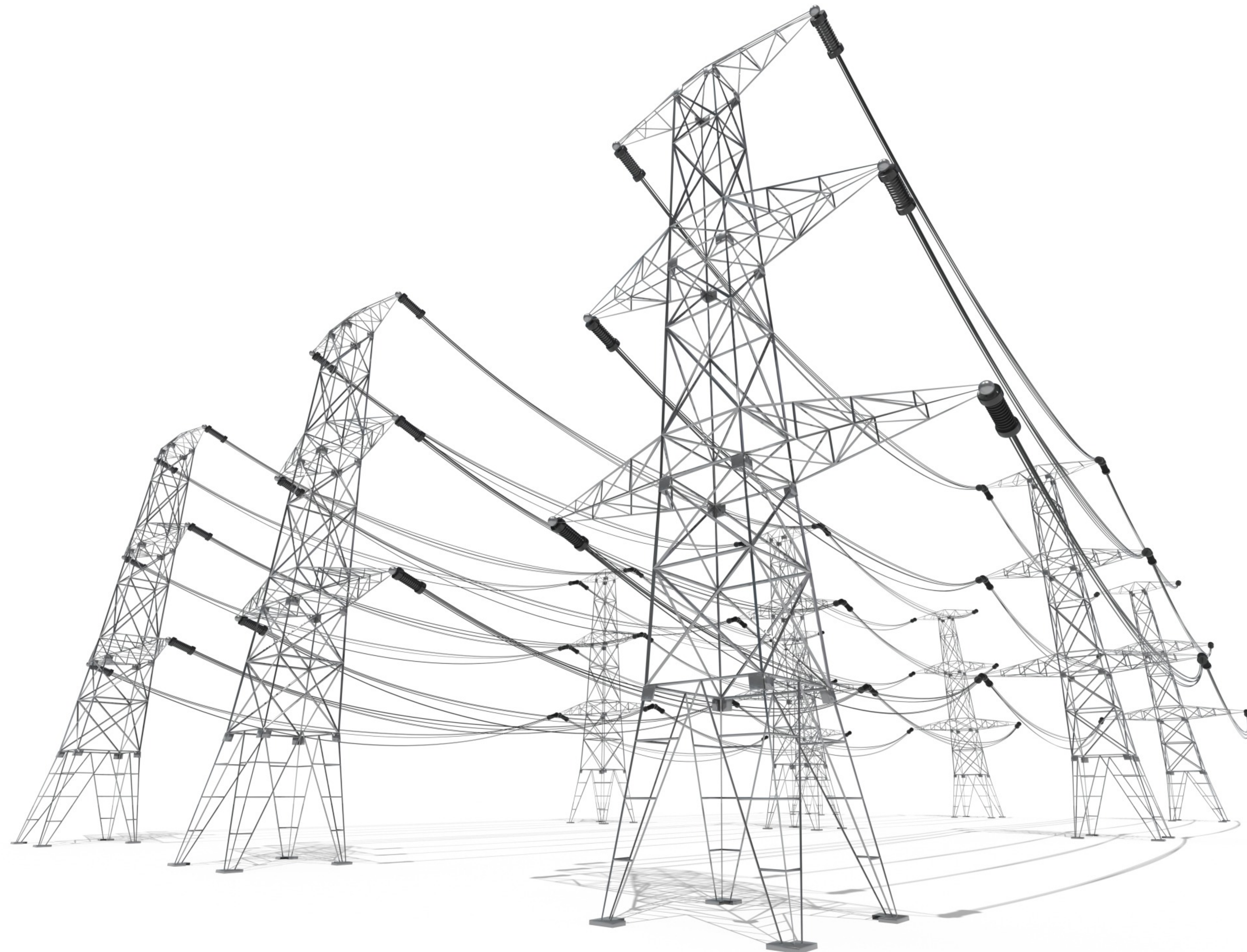


## **TOWER LINE & MULTI CIRCUIT WORK**

Tower Structure must be designed for the Loads imposed on it by the conductors. The weight of the conductor must be supported, as well as dynamic loads due to wind, ice and other accumulation and effects of vibration. Where conductors are in a straight line, towers need only resist the weight since the tension in the conductors approximately balances with no resultant force on the structure selection of line type accordingly to site condition.

### **Some steps are as follow**

- Route survey and selection
- Procurement planning & effective management
- Local Liaison, Agreement & Documentation
- Excavation & foundation construction
- Tower erection with suitable method
- Stringing, tightness & tack welding inspection, certification
- Testing
- Commissioning



## **ENGINEERS & TECHNICAL MANPOWER SUPPORT**

We provide permanent & temporary placing service. We have a large pool of highly qualified & experienced professionals, Engineers & technician workforce/staff covering all major discipline.

We deploy permanent expert & experience workforce for operation support as per our customer requirement and out source work.

Depending upon the job / work required, organization culture, education & skill requirement, safety awareness and other requirement for the position, we take specific executive / staff search for assignments at all level and conduct preliminary interview at customer end. We recruit & deploy Managers / Engineers/Technicians / Staff / Worker and Labor.



- Project Execution Support
- Commissioning Support
- Shut Down and Emergency Service Support
- Outsource maintenance
- Third party inspection for project and operation
- Substation & Transmission Line
- Other Technical Services

We mainly focus on work productivity & efficiency improvement of our staff / worker. We are result oriented and provide cost optimization solution. We empower our staff / worker by providing them proper training, skill enhancement program, safety training.



# **CONSTRUCTION & CIVIL MANPOWER SUPPORT**

We provide Skilled and Semi - Skilled workers too. Semi-skilled workers are very important for any organization as they have the basic knowledge of the work they are doing and they work under the guide-line of skilled workers. They provide labor work as per Skilled worker requirement. They are well trained to work under the supervision of skilled workers to finish a job and assist the skilled workers.

- Engineers - Civil / Electrical / Mechanical
- Supervisor
- Quantity Supervisor
- Safety Officer
- Foremen - Civil / Electrical / Plumbing/Carpentry / Masonry /Scaffolding / Steel Fixing / Welding, etc
- Time Keeper
- Heavy Equipment Operators
- Heavy Driver
- Light Driver
- Concrete Pump Operator
- Scaffolders
- Electrician and other support
- Carpenter
- Painting Roller / Brush
- Sand Blasting





## **CHARTERED ENGINEER'S SERVICES**

- Cost effective Solution of
  - ◆ Balance of Plant
  - ◆ HV/EHV line
  - ◆ Pooling Substations
- CE Certification for various types of Used Electrical & Electronic Goods
- Valuation & CE Certification of Multi function Devices
- Installation certificates
- Computation of Amortization cost of machineries and tools used in the industries
- CERTIFICATION OF BILL OF MATERIALS (BOM) submitted by Solar and Wind Power Developer

- CE Certification of investment in plant & machinery required
- Computation of installed capacity of plant and production certification
- Equipment / Machinery audit and fitness certificate
- Rate contract fixation and criteria decision for vendors & contractors
- Wind Turbine Generator inspection disposition and rectification
- Solar Power Plant inspection disposition and rectification
- EHV/HV Underground / above ground line inspection disposition and rectification
- Develop guideline, standard operating procedures and rule
- Provide special services for new plant setting up
- Other customer services for special requirement

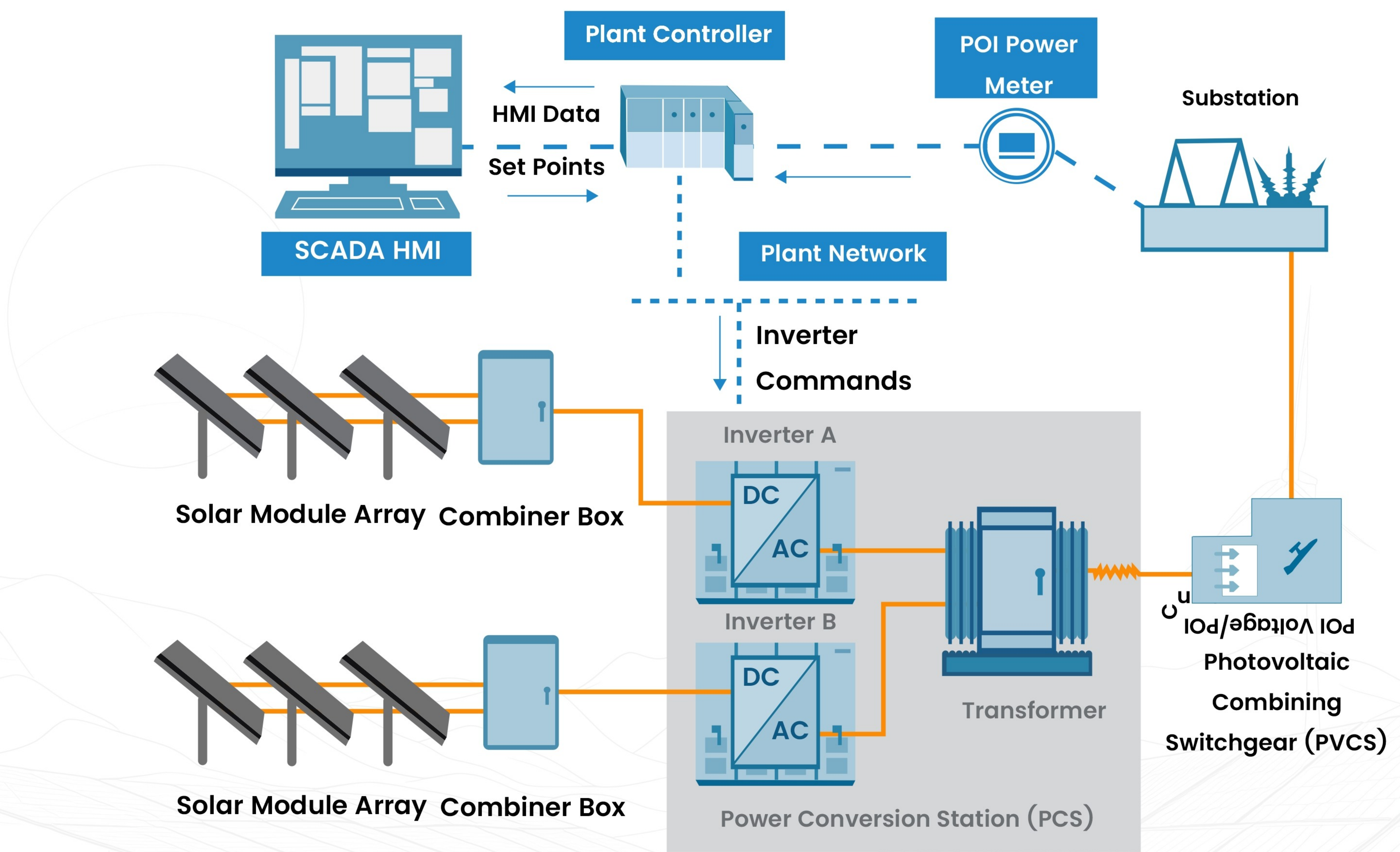


## **CONCEPT TO COMMISSIONING**

We provide complete EPC (Engineering, Procurement & Construction) of Solar Grid connected power plants and off grid solutions.

- Project Development, Project Planning and Installation of photovoltaic systems
- Set-up of turnkey solar PV farms from KW to MW generating capacity
- Preparation and construction (Foundation, Cable Trench, Control Room)
- Design and layout of earthing system and laying
- Installation of mounting system (ground screw / Pile drive ballasted) and modules





# THANK YOU FOR CHOOSE US

## OUR VALUED CLIENTS



adani



onix  
Renewable Limited

[kdmpower.skd@gmail.com](mailto:kdmpower.skd@gmail.com)

Prajesh Khuman  
+91 99780 55001

Nikhil Solanki  
+91 85118 30007

Hardik Vala  
+91 88668 90157